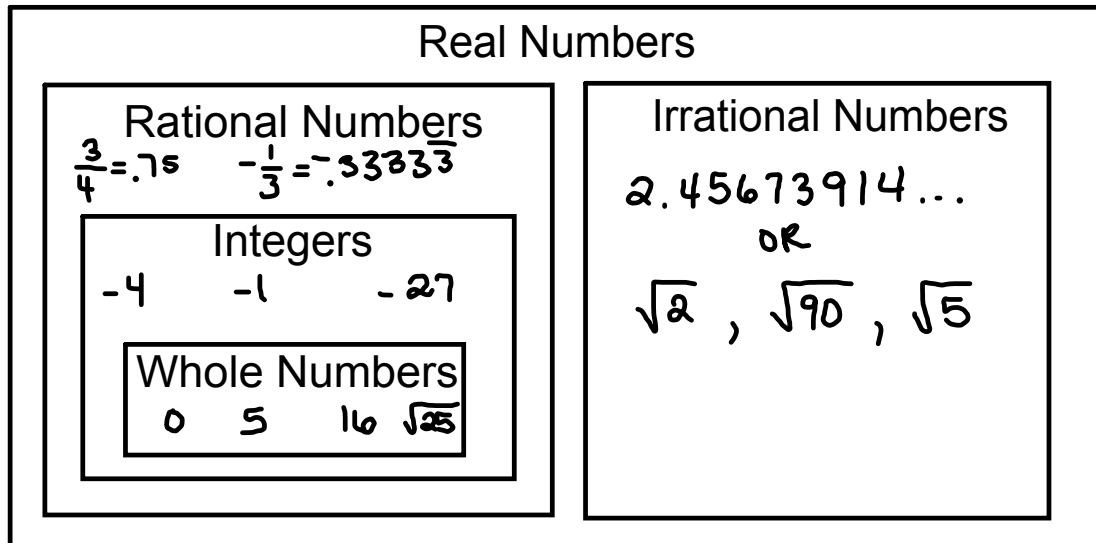


## 8th Grade

### 3.1 Classifying Real Numbers



## Classify Numbers

Tell whether the numbers below are whole numbers, integers, rational or irrational numbers.

Numbers	Real	Rational	Irrational	Integer	Whole
$-\sqrt[4]{16}$	X	$-\frac{4}{1}$ X		X	
2.5	X	$2\frac{1}{2}$ X			
$\sqrt{18}$	X		X		
-6	X	$-\frac{6}{1}$ X		X	
2.756	X	$2\frac{756}{1000}$ X			
$-\sqrt{24}$	X		X		
$\sqrt{4} = 2$	X	$\frac{2}{1}$ X		X	X

**rational**  
fraction  
repeating ...  
terminating ...  
2.5  
3/4  
7.898989...

**irrational**  
nonterminating ...  
never ending  
sqrt(2)  
3.58201...  
8.9392...  
2.4295872...

Edit

?

Reset

# Homework Worksheet

### 3.1 Classifying Real Numbers and WS.notebook

November 19, 2015

8th Grade - 3.1 Classifying Real Numbers

Name: \_\_\_\_\_ Date: \_\_\_\_\_ Hr: \_\_\_\_\_

Put an x in each box that applies to the number given.

Number s	Real	Rational	Irrational	Integer	Whole
6					
-3					
13.4					
-2/3					
$\sqrt{12}$					
$2\frac{1}{2}$					
0.85					
-5/6					
7.654					
4					
$-\sqrt{8}$					
$4.\overline{33}$					
$\sqrt{25}$					
9/2					

8th Grade - 3.1 Classifying Real Numbers

Name: Key Date: \_\_\_\_\_ Hr: \_\_\_\_\_

Put an x in each box that applies to the number given.

Number s	Real	Rational	Irrational	Integer	Whole
6	X	X		X	X
-3	X	X		X	
13.4	X	X			
-2/3	X	X			
$\sqrt{12}$	X		X		
$2\frac{1}{2}$	X	X			
0.85	X	X			
-5/6	X	X			
7.654	X	X			
4	X	X		X	X
$-\sqrt{8}$	X		X		
$4.\overline{33}$	X	X			
$\sqrt{25}$	X	X		X	X
9/2	X	X			